

SPECIFICATION

EASY — IN A — HARD WORLD



TANDEM VIBRATORY ROLLERS | CT160 / 260 / 380 / 430

Operating weight: 3770-9921lb (1710-4500kg) Engine power: 14.2 - 36.5kW Drum width: 2.7-4.7ft (800-1400mm)



EASY IN A HARD WORLD.

The JCB CT tandem rollers have been designed to be easy to use, easy to be productive, easy to keep safe and secure and easy to service. The simple drum offset increases the efficiency and the chamfered drum edges create a smooth finish. They are also trailer towable for ease of transport.



EASY AND EFFICIENT.

The JCB CT tandem rollers have been designed to be easy to use, easy to be productive, easy to keep safe and secure and easy to service.

EASY TO USE.

With a simple, intuitive control layout and superior operator comfort, our new tandem rollers make working not just easy but also a pleasure.



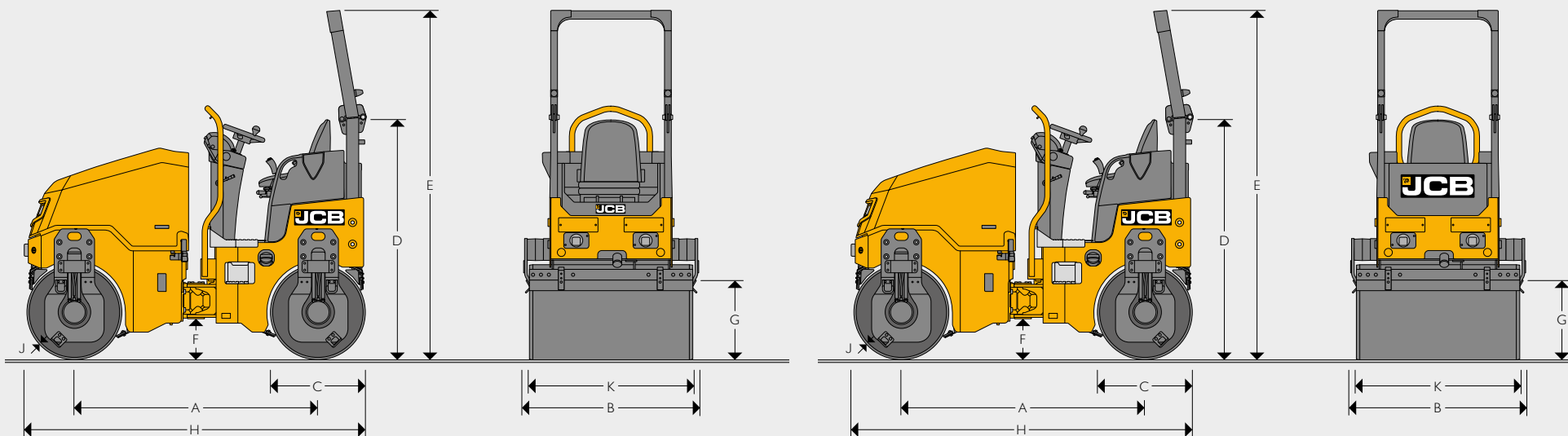
EASY TO SERVICE.

Easy access engine service points, longer service intervals and many zero maintenance parts, our CT tandem rollers are easy to maintain.

EASY TO KEEP SAFE AND SECURE.

With JCB's LiveLink telematics system as standard, plus many built-in safety features, the CT tandem rollers give you complete peace of mind.

STATIC DIMENSIONS



STATIC DIMENSIONS

			CT160-80	CT160-100	CT260-100	CT260-120	CT380-130	CT430-140
A	Wheelbase	ft-in (mm)	5.5 (1560)	5.2 (1560)	5.10 (1790)	5.10 (1790)	6.8 (2020)	6.8 (2020)
B	Overall width	ft-in (mm)	3.1 (960)	3.6 (1090)	3.7 (1095)	4.3 (1295)	4.7 (1390)	4.11 (1490)
C	Drum diameter	ft-in (mm)	1.10 (580)	1.10 (580)	2.3 (700)	2.3 (700)	2.7 (800)	2.7 (800)
D	Height to top of seat	ft-in (mm)	5.4 (1650)	5.4 (1650)	5.9 (1755)	5.9 (1755)	5.8 (1720)	5.8 (1720)
E	Height to top of ROPS	ft-in (mm)	8.1 (2485)	8.1 (2485)	8.3 (2510)	8.3 (2510)	8.4 (2550)	8.4 (2550)
F	Ground clearance	ft-in (mm)	10 (255)	10 (255)	10.6 (270)	10.6 (270)	11.8 (300)	11.8 (300)
G	Curb clearance	ft-in (mm)	1.8 (510)	1.8 (510)	1.10 (560)	1.10 (560)	2.3 (680)	2.3 (680)
H	Total travel length	ft-in (mm)	7 (2140)	7 (2140)	8.2 (2490)	8.2 (2490)	9.3 (2830)	9.3 (2830)
J	Drum thickness	ft-in (mm)	0.5 (12)	0.5 (12)	0.5 (12)	0.5 (12)	0.7 (17)	0.7 (17)
K	Drum width	ft-in (mm)	2.7 (800)	3.3 (1000)	3.3 (1000)	3.11 (1200)	4.3 (1300)	4.7 (1400)

OPERATING DATA		CT160-80	CT160-100	CT260-100	CT260-120	CT380-130	CT430-140
Nominal weight	lb (kg)	3704 (1630)	3770 (1710)	5027 (2280)	5335 (2420)	8422 (3820)	9304 (4220)
Operating weight (CECE)	lb (kg)	3770 (1710)	3946 (1790)	5335 (2420)	5644 (2560)	9039 (4100)	9921 (4500)
Maximum operating weight	lb (kg)	3946 (1790)	4123 (1870)	5732 (2600)	6041 (2740)	9700 (4400)	10692 (4850)
Operating weight front	lb (kg)	1764 (800)	1852 (840)	2624 (1190)	2778 (1260)	4519 (2050)	4960 (2250)
Operating weight rear	lb (kg)	2006 (910)	2094 (950)	2712 (1230)	2866 (1300)	4519 (2050)	4960 (2250)
Working width	mm	31.5 (800)	39.4 (1000)	39.4 (1000)	47.2 (1200)	51.2 (1300)	55.1 (1400)
Operating linear load	lb/in (kg/cm)	56.0 (10.0) 47.0 (8.4)	47.0 (8.4) 53.1 (9.5)	66.6 (11.9) 86.1 (12.3)	58.9 (10.5) 60.7 (10.9)	88.2 (15.8) 88.2 (15.8)	90.0 (16.1) 90.0 (16.1)
Exciter frequency	vpm (Hz)	3000 (50) 3960 (66)	3000 (50) 3960 (66)	3000 (50) 3960 (66)	3000 (50) 3960 (66)	3000 (50) 3960 (66)	3000 (50) 3960 (66)
Nominal amplitude	in (mm)	0.016 (0.41)	0.014 (0.35)	0.022 (0.56)	0.020 (0.51)	0.020 (0.5)	0.020 (0.5)
Centrifugal force (each drum)	lbf (kN)	2452 (10.9) 4297 (19.1)	2452 (10.9) 4297 (19.1)	5310 (23.6) 9247 (41.1)	5310 (23.6) 9247 (41.1)	9217 (41) 13264 (59)	9892 (44) 14163 (63)
Max. Working speed	km/h	9	9	10	10	10	10
Drum offset left / right - manual (option)	mm	2.2 (56)	2.2 (56)	2.4 (60)	2.4 (60)	3.1 (80)	3.1 (80)
Steering angle	degrees	±33	±33	±33	±33	±34	±36
Oscillation angle	degrees	±8	±8	±8	±8	±13	±13
Inner turn radius	in/mm	85.0 (2160)	82.3 (2090)	97.4 (2475)	93.5 (2375)	104.9 (2665)	103.0 (2615)
Gradeability with vibration up to	%	25	25	30	30	30	30
Gradeability without vibration up to	%	35	35	40	40	40	40

ENGINE		CT160	CT260	CT380	CT430
Make		Kubota	Kubota	Kohler	Kohler
Model		D1005-E4B-EU	D1703-M-DI-E4B	KD11903	KD11903
Type		3 cylinder, water-cooled four-stroke diesel engine	3 cylinder, water-cooled four-stroke diesel engine	3 cylinder, water-cooled four-stroke diesel engine	3 cylinder, water-cooled four-stroke diesel engine
Piston displacement	cm ³	1001	1647	1861	1861
Performance	kW (hp)	14.2 (19.0)	18.2 (24.4)	36.5 (48.9)	36.5 (48.9)
Operating speed	rpm	2550	2200	2600	2600
Starting device		Electric motor	Electric motor	Electric motor	Electric motor
Air cleaner		Dry cartridge + safety cartridge	Dry cartridge + safety cartridge	Dry cartridge + safety cartridge	Dry cartridge + safety cartridge
Fuel filler		Cartridge	Cartridge	Cartridge	Cartridge

PROPULSION	
	Hydrostatic with variable displacement pump and fixed displacement motors with direct drive to both drums = double drum drive.

EXCITER DRIVE	
	Electronically controlled hydrostatic direct drive on both drums for double vibration or single vibration front or rear, AVC (automatic vibration control).

EXCITER	
	Single-shaft circular exciter.

STEERING SYSTEM	
	Servo assisted, maintenance free centre articulation with oscillation facility.

SERVICE CAPACITIES		CT160	CT260	CT380	CT430
Fuel tank capacity	gal/litres	8.7 (33)	12.2 (46)	12.2 (46)	12.2 (46)
Sprinkler water tank capacity	gal/litres	26.4 (100)	52.0 (197)	52.0 (197)	52.0 (197)

BRAKING SYSTEM	
	Service brake: Hydrostatic propulsion system.
	Parking brake: Hydraulically-released brake on both drums (SAHR).

WATER SYSTEM	
	Pressurised sprinkling system, adjustable scrapers (two each drum), changeable nozzles, multiple water filtering.

ELECTRICAL SYSTEM		CT160	CT260	CT380	CT430
Electrical system voltage	V	12	12	12	12
Battery capacity	Ah	62	62	74	74
Alternator	A	60	70	100	100

DRIVERS STAND / INSTRUMENTS	
	Fuel, battery charging current, sprinkler system, parking brake, hour meter, engine oil pressure, air filter condition, hydraulic oil level and temperature, water level indicator, cup holder, comfortable adjustable operator seat and safety belt, flashing amber beacon, fan guard, locking instrument panel cover, reverse alarm, foldable ROPS, operator presence detection, seat belt detection.

OPTIONS	
	Foldable ROPS, road light kit, seat belt activated green beacon, key immobiliser, UK language pack (green beacon, amber seat belt, Cesar Datatag), Italian road homologation kit, tool kits.
	CT380/430 only: Edge cutting & pressing device PRO PACKAGE CT380/430: 2nd drive lever, foldable and spring-loaded drum scrapers, white noise reverse alarm, additional LED working lights on ROPS asphalt temperature sensor.





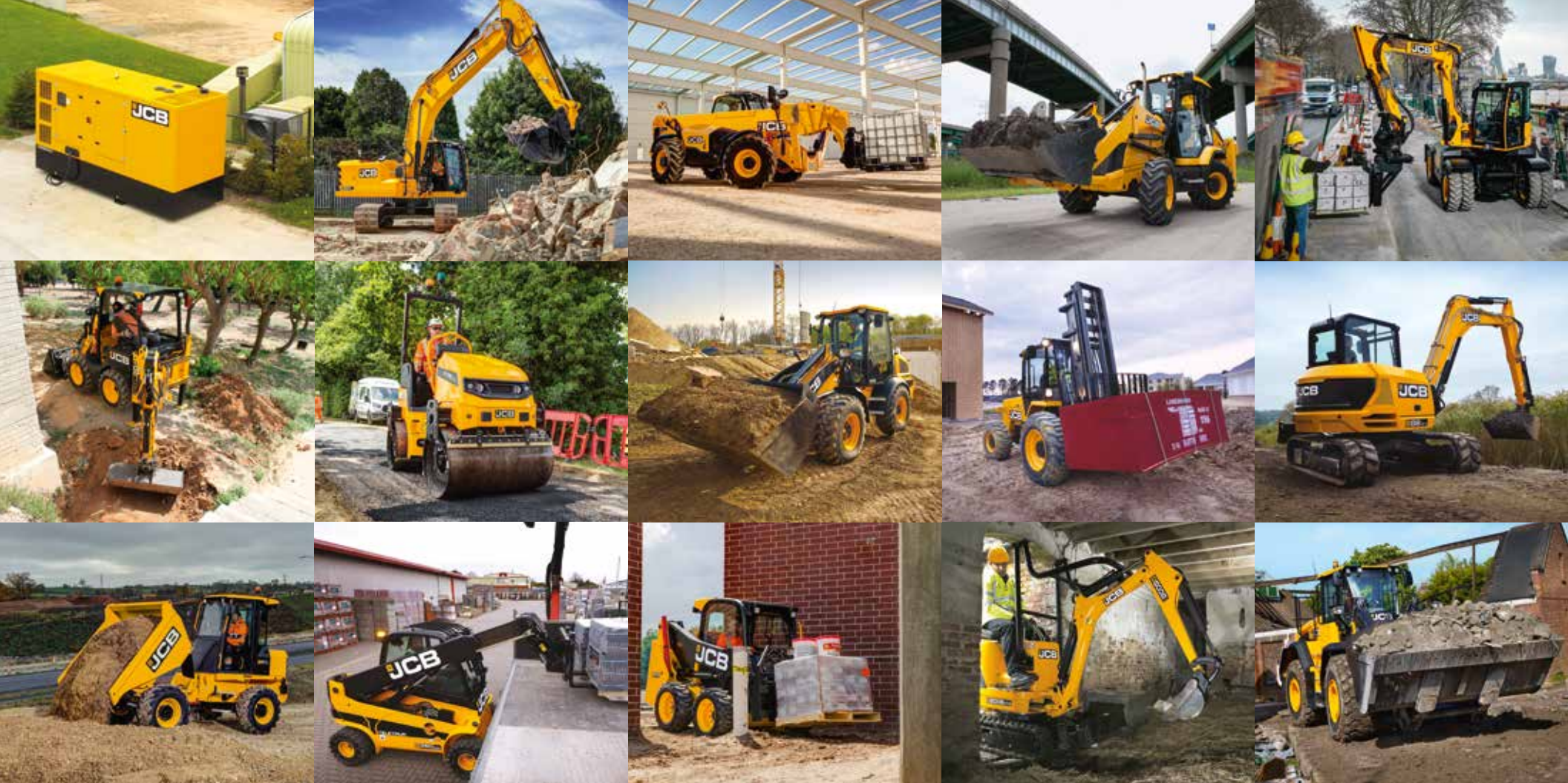


JCB

JCB
Viiromax

HIGHWAY MAINTENANCE

L7D
450



ONE COMPANY, OVER 300 MACHINES.

Your nearest JCB dealer

Tandem Vibratory Rollers CT160 / 260 / 380 / 430

Operating weight: 3770-9921lb (1710-4500kg) Engine power: 14.2 - 36.5kW Drum width: 2.7-4.7ft (800-1400mm)

JCB North American – Headquarters

Savannah. 2000 Bamford Blvd., Savannah, Georgia, 31322 Tel: (912) 447-2000

Download the very latest information on this product range at www.jcb.com

JCB inc. All rights reserved. No part of this publication may be reproduced, stored in a retrieval system, or transmitted in any form or by any other means, electronic, mechanical, photocopying or otherwise, without prior permission from JCB inc. All references in this publication to operating weights, sizes, capacities and other performance measurements are provided for guidance only and may vary dependant upon the exact specification of machine. They should not therefore be relied upon in relation to suitability for a particular application. Guidance and advice should always be sought from your JCB Dealer. JCB reserves the right to change specifications without notice. Illustrations and specifications shown may include optional equipment and accessories. The JCB logo is a registered trademark of J.C. Bamford Excavators Ltd.

